



SMS

SOMERSET MIDDLE SCHOOL

SMS Building Committee
Ai3 Architects, LLC
CGA Project Management



April 4, 2022

Building Committee Meeting Agenda

▶ **DESE Approval**

▶ **MAAB Variance**

▶ **FF&E (Furniture, Fixtures, & Equipment) Update**

▶ **Safety & Security Discussion Update**

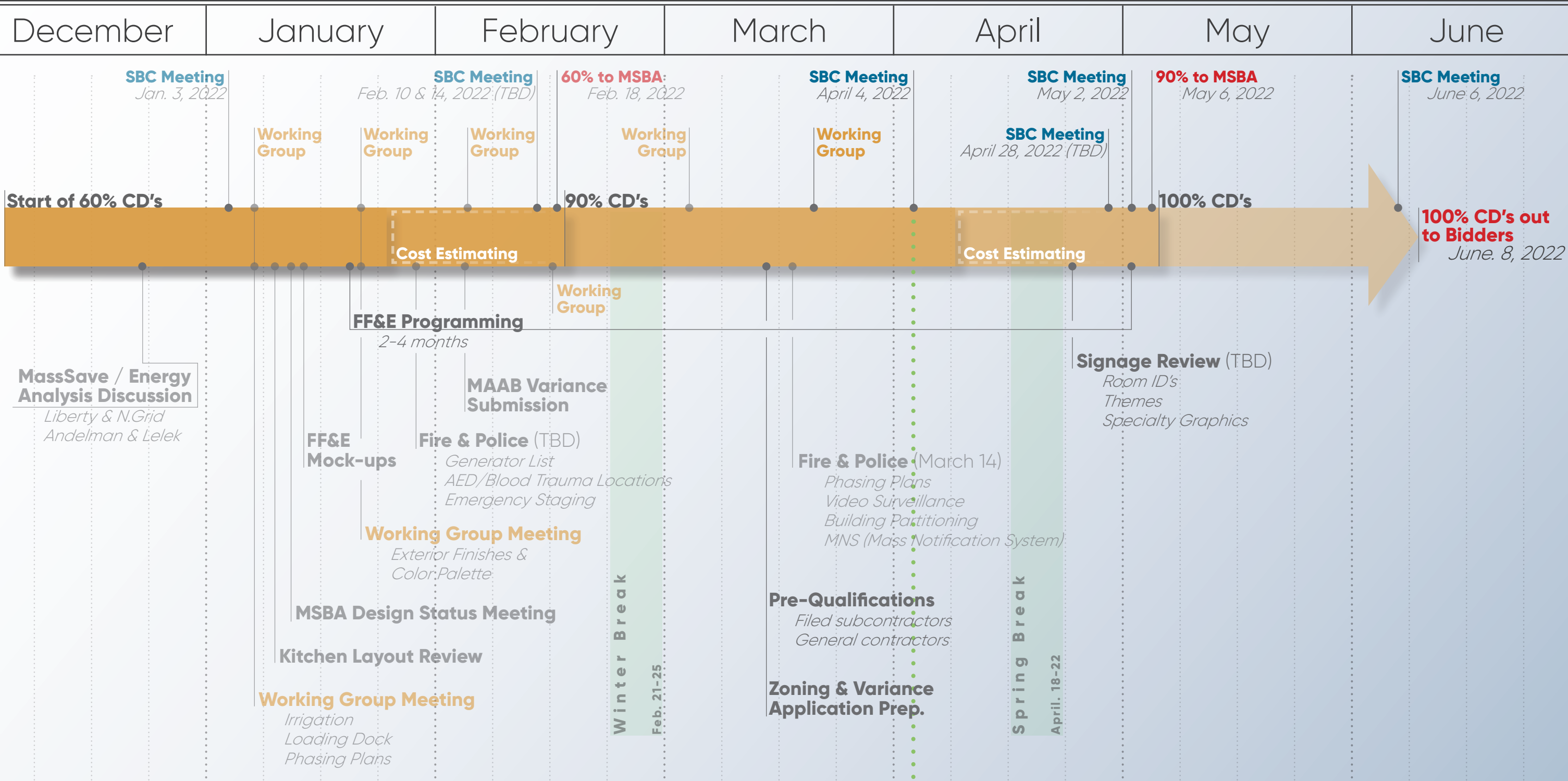
▶ **Proprietary Items Review**

▶ **Gym Floor Lines**

▶ **Review of Alternate Recommendations**

▶ **Review of Tree Preservation Report**

SMS | Construction Document Milestones



DESE Re-submittal

SPED Resource Room (TLC):

- Toilet room was no longer required
- BCBA (Board Certified Behavior Analyst) Office to be included

Therapeutic Learning Centers

Therapeutic Learning Centers are located at South Elementary and at Somerset Middle School. The programs support students in grades K-8. Therapeutic Learning Centers were developed to provide students with social-emotional/behavioral disabilities a program to support the development of skills necessary to support them in the general education classroom. Within the Therapeutic Learning Centers, students are provided with support to access strategies for coping and de-escalation. Academic support is provided to ensure that students continue to access grade level curriculum. Support is provided within the general education classrooms by the learning center teachers and/or paraprofessionals. The TLC program follows a structured behavior support program. The school adjustment counselor provides daily social skills lessons and also supports students individually according to their IEP plans. The TLC is run by a special education teacher, BCBA, SAC, and program paraprofessionals. **The BCBA office is located within the TLC classroom to provide direct access to the space. The BCBA works closely with the TLC staff and students and their adjacency the TLC classroom is integral to the coordination of the program and the consultation with staff.**

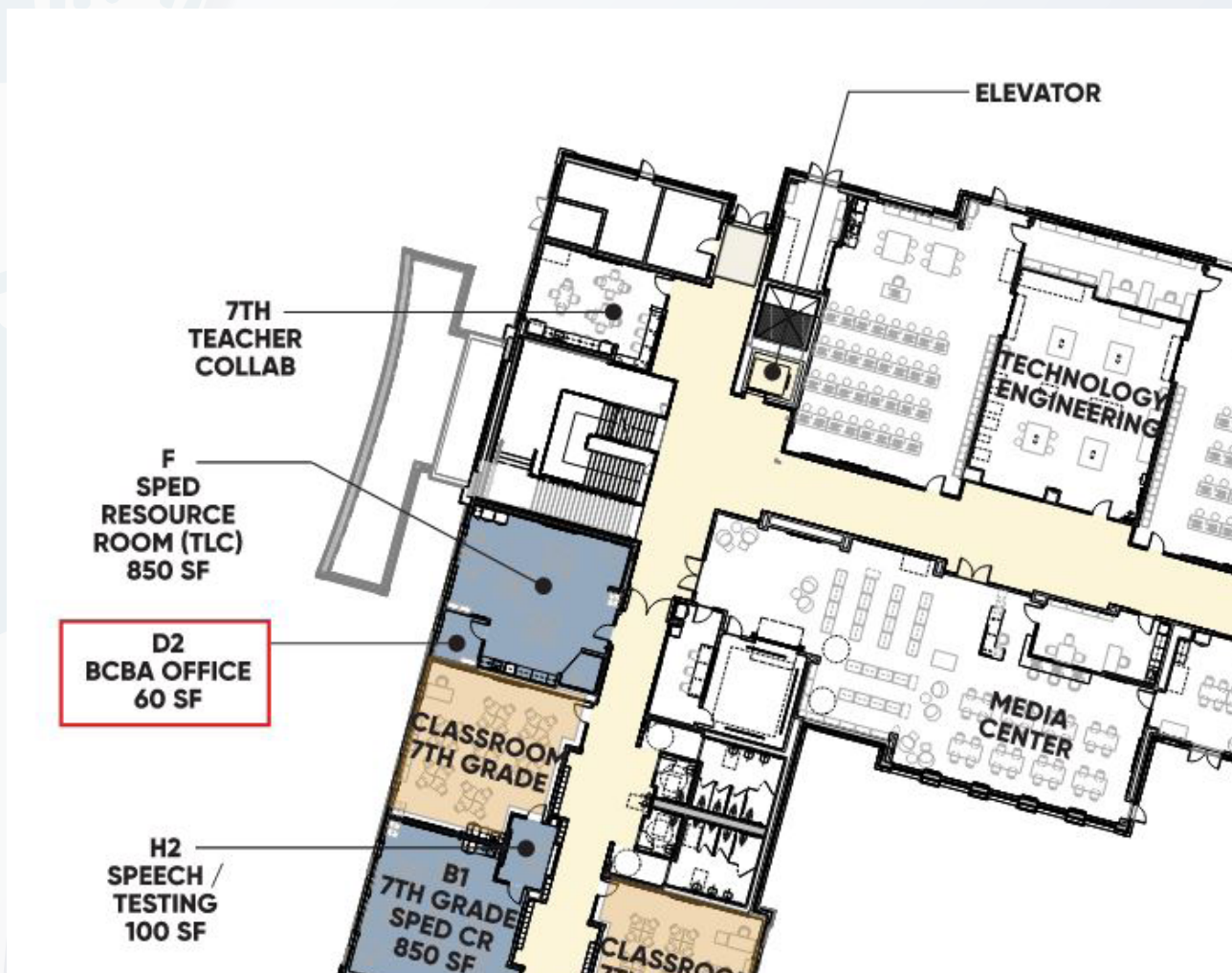
Design Solution:

The toilet room within the TLC space was reallocated as an office for the Schools BCBA, and positioned along the exterior wall to provide natural daylight and exterior views.

SOMERSET MIDDLE SCHOOL

DESE Re-submittal

Approved March 14, 2022



Jeffrey C. Riley
Commissioner

Massachusetts Department of Elementary and Secondary Education

75 Pleasant Street, Malden, Massachusetts 02148-4906

Telephone: (781) 338-3000
TTY: N.E.T. Relay 1-800-439-2370

March 14, 2022

Mary Pichetti
Director of Capital Planning
Massachusetts School Building Authority
40 Broad Street, Suite 500
Boston, MA 02109

Dear Ms. Pichetti:

We have reviewed the revised documentation that was submitted by the Somerset Public Schools on March 7, 2022 for the construction project at Somerset Middle School. We have done so in accordance with M.G.L. chapter 70B, section 6(6), which instructs us to certify "...that adequate provisions have been made in the school project for children with disabilities, as defined in section 1 of chapter 71B...".

We are satisfied with the district's revised proposal and believe their special education plan will continue to provide the community with an opportunity to serve its special education students well. The Massachusetts Department of Elementary and Secondary Education therefore certifies that this school project has been planned to adequately provide appropriate space to serve the programs and school populations referenced in M.G.L. chapter 70B, section 6(6) noted above.

Sincerely,

Matthew J. Deninger
DESE designee on the MSBA Board of Directors

Cc: Vani Rastogi-Kelly, Director, Public School Monitoring, DESE
Amy Paulin, Assistant Director, Public School Monitoring, DESE
Jesee Kihiko, Supervisor, Public School Monitoring, DESE
Katie DeCristofaro, Capital Program Manager, MSBA
Elena Seiti, Program Manager, MSBA
Allison Sullivan, Senior Project Coordinator, MSBA
Jennifer Flynn, Senior Project Coordinator, MSBA
Ashley Smith, MSBA
Greg Brunell, MSBA

MAAB Variance Application

Massachusetts Architectural Access Board Application for Variance

Original submission date February 17, 2022

- Variance Request #1 - Handrails on two auditorium ramps - MAAB Section 24.5.1
- Variance Request #2 - Continuous handrails at auditorium telescoping seats - MAAB Section 27.4.1
- Variance Request #3 - Continuous handrails at gymnasium telescoping bleachers - 27.4.1
- Variance Request #4 - Continuous handrails at student dining assembly seating - MAAB Section 27.4.1

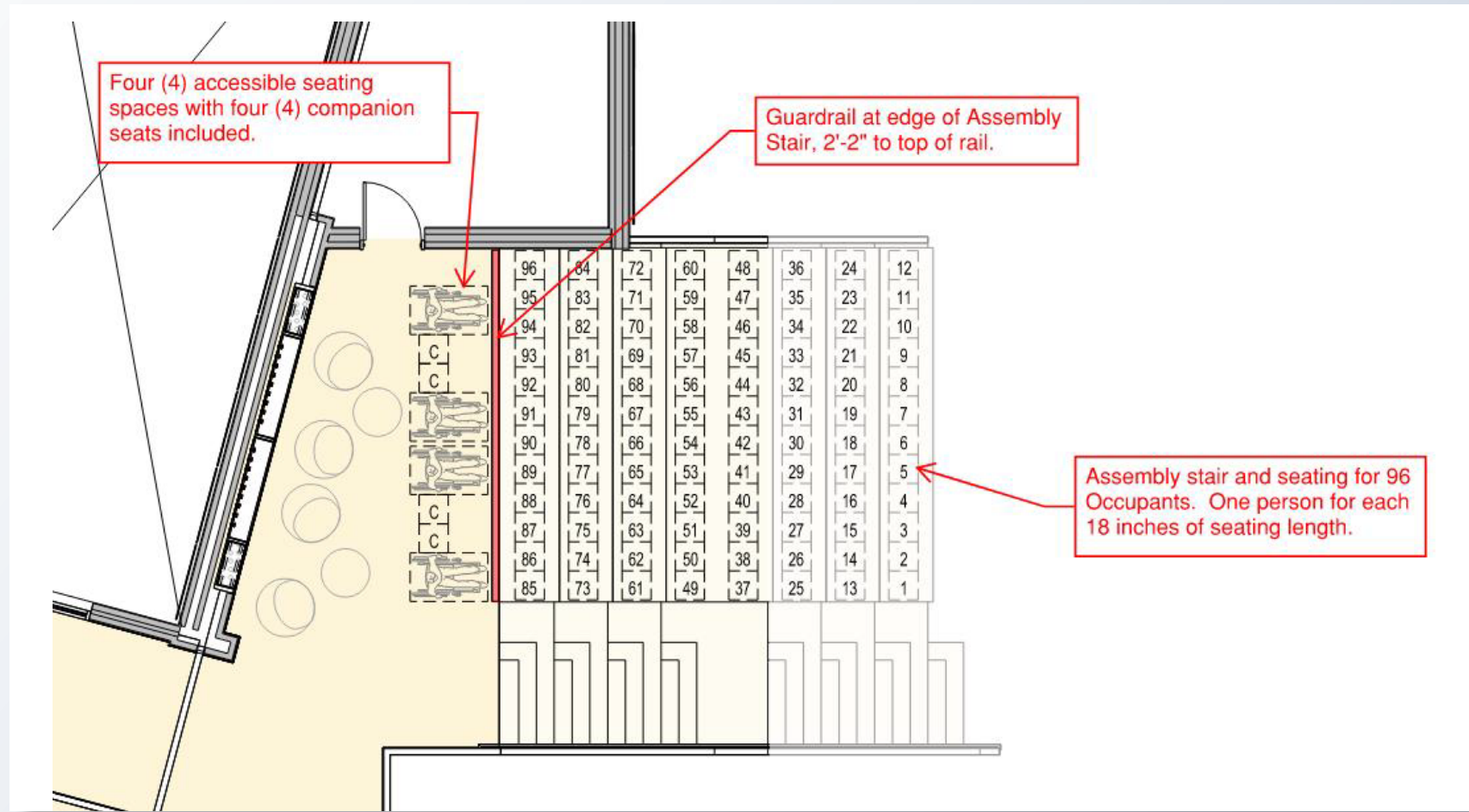
Notice of Action from MAAB received on March 14, 2022

- Variance Request #1 - **GRANTED** as proposed.
- Variance Request #2 - **GRANTED** as proposed.
- Variance Request #3 - **GRANTED** as proposed on condition that appropriate number of wheelchair spaces are provided.
- Variance Request #4 - **CONTINUED** to request the Petitioner to provide the MAAB with count of seats on assembly stair and plans showing appropriate number of wheel spaces are provided.

MAAB Variance Application

Massachusetts Architectural Access Board Application for Variance

- Original submission date February 17, 2022
- Notice of Action from MAAB received on March 14, 2022
- **District Response to Notice of Action submitted on March 17, 2022**





SOMERSET MIDDLE SCHOOL

FF&E Programming Meetings

Round #1 Programming

January 25, 2022 - January 28, 2022

17 Meetings

Round #2 Programming

March 15, 2022 - March 31, 2022

14 Meetings

Round #3 Programming Required:

- General Classrooms
- Teacher Collaboration
- Project Innovation Labs
- Reading Rooms
- Performing Art Spaces
 - Auditorium
 - Band
 - Chorus
- Adaptive PE & OT/PT

Safety & Security Meetings

Several meetings during the planning process have occurred to review emergency protocols, emergency vehicular circulation and building wayfinding, mass notification systems, building security measures, building emergency systems and technology, and building organization. These discussions included personnel from the School and District Administration, Police Department, and the Fire Department, in addition to the School Resource Officers.

Safety and security discussions were held on the following dates:

- **September 9, 2021**
- **October 7, 2021**
- **February 15, 2022**
- **March 14, 2022**
- **March 22, 2022**

No additional meetings are expected at this time, however, correspondence and review with District Administration and Fire/Police personnel will continue over the next several months.

SOMERSET MIDDLE SCHOOL

Proprietary Products

Approved Proprietary Items at Schematic Design:

- ✓ Door Hardware SCHLAGE
- ✓ Automatic Temperature Controls Johnson Controls
- ✓ Boilers Lochinvar
- ✓ Access Controls S2 - Access Control
- ✓ Scoreboards Daktronics

Additional Proprietary Items to Review:

Digital Message Clock Telecor / Atlas

Demonstrations to School Administration for both products were held on March 30, 2022. Additional review is required before a preferred option is selected.

Voice Lift System Topcat

Under review

Wireless Digital Teaching Station **Pilot X** by Hovercam

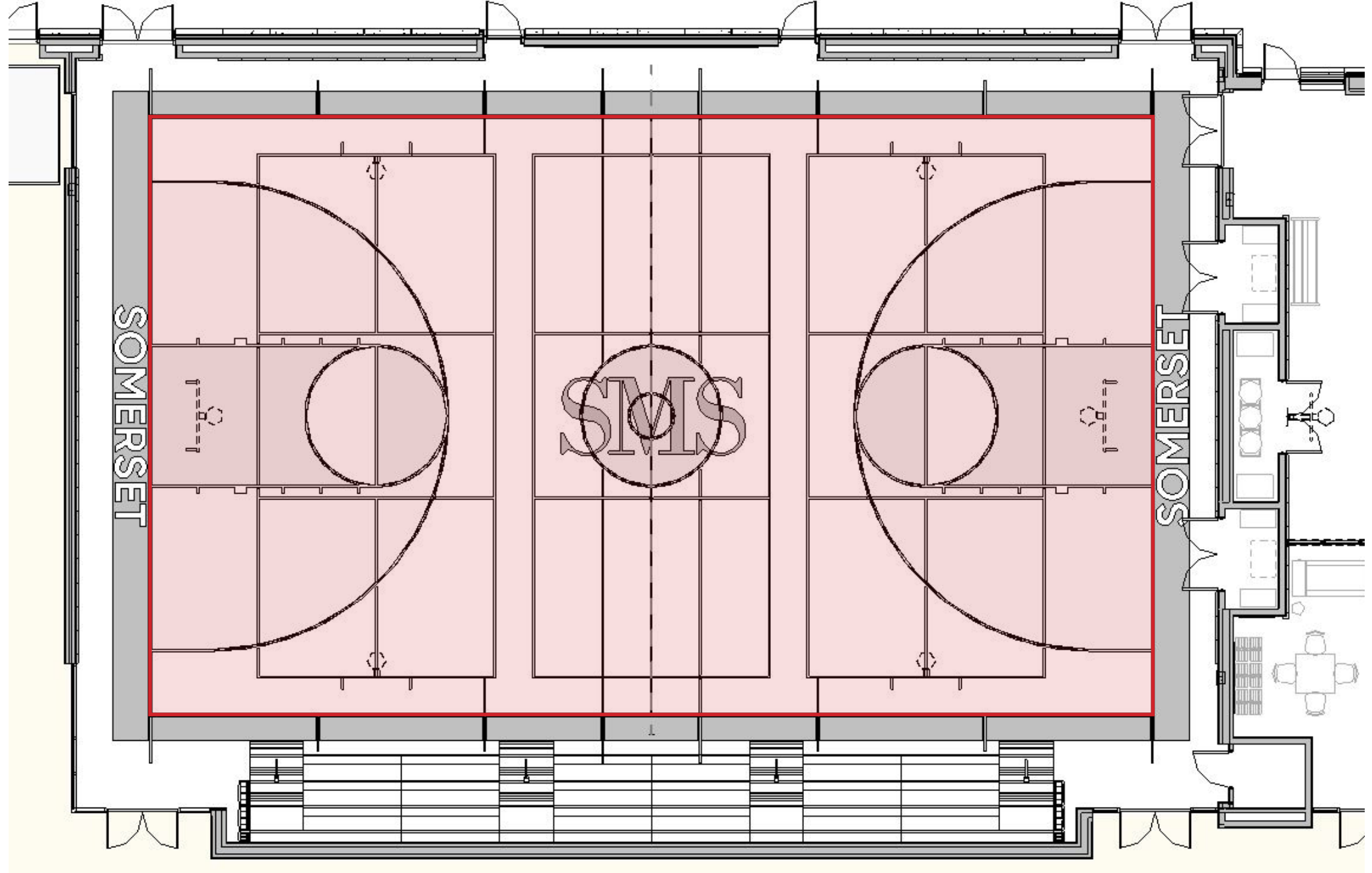
Demonstration and mock-up to be provided at the Middle School in the next two weeks



The items listed above have been identified as proprietary because they are already installed in other school buildings in the District, and will be leveraged to provide the Somerset Middle School with the same system. It is the School Building Committee's belief, for the reason outlined above, it is in the Town of Somerset's best interest to require above items listed to be written as a proprietary specification.

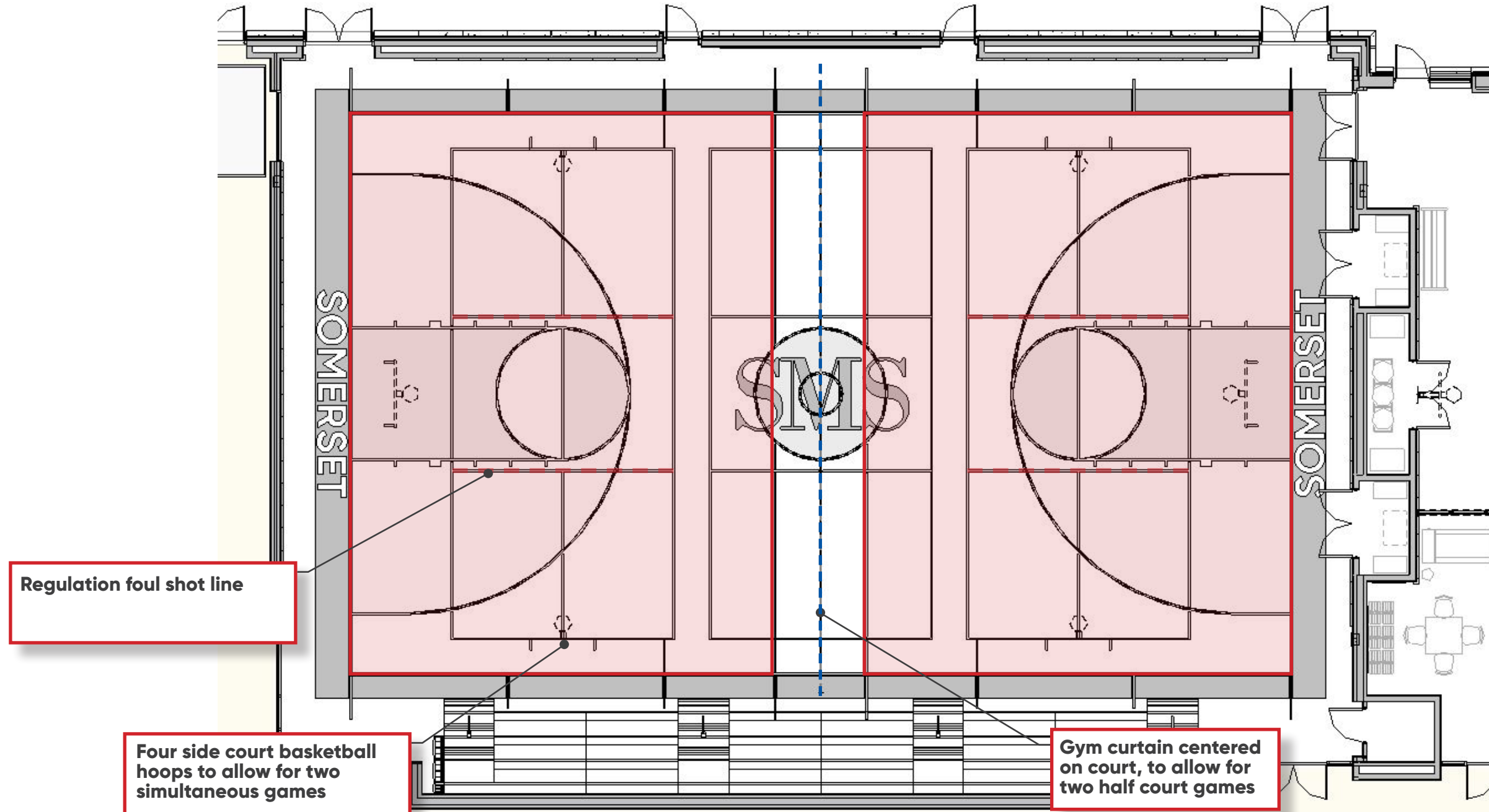
SOMERSET
MIDDLE SCHOOL

Gym floor lines, color, and logo: Basketball (full court)



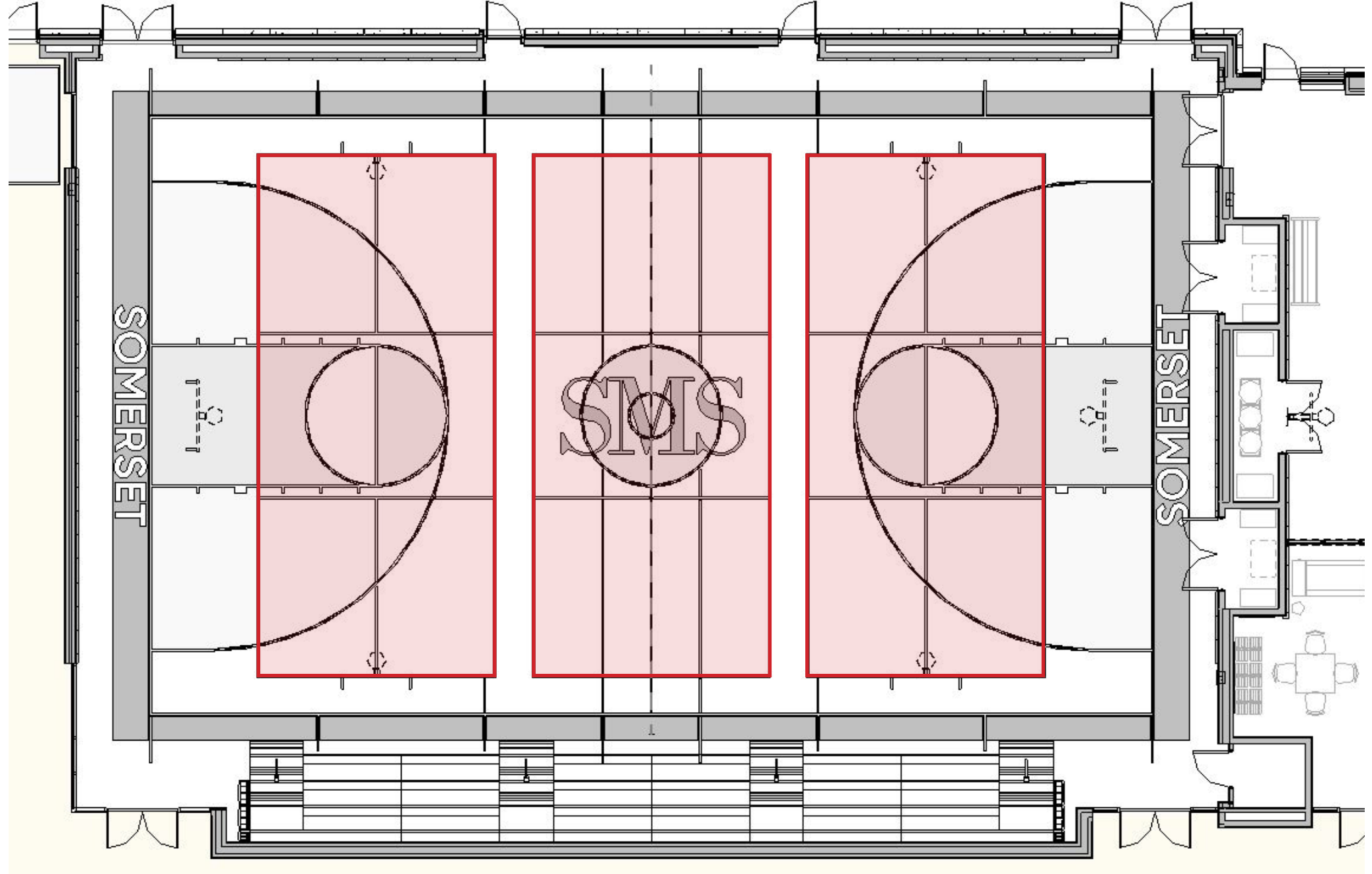
SOMERSET
MIDDLE SCHOOL

Gym floor lines, color, and logo: Basketball (half courts)



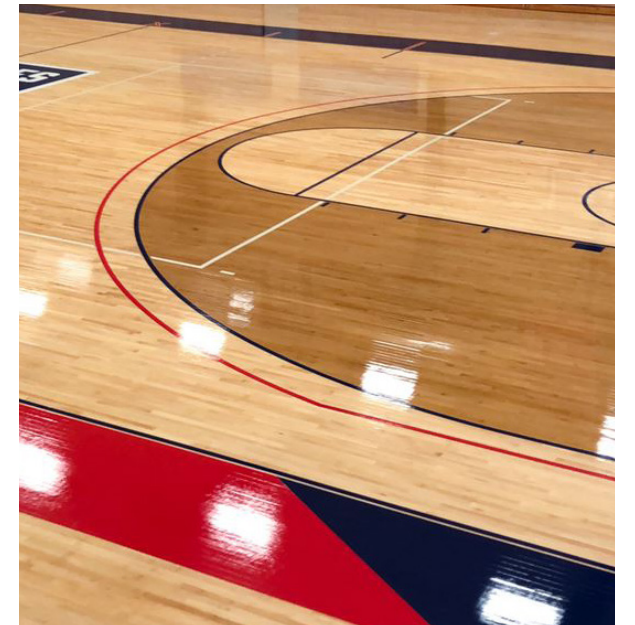
SOMERSET
MIDDLE SCHOOL

Gym floor lines, color, and logo: Pickleball Courts



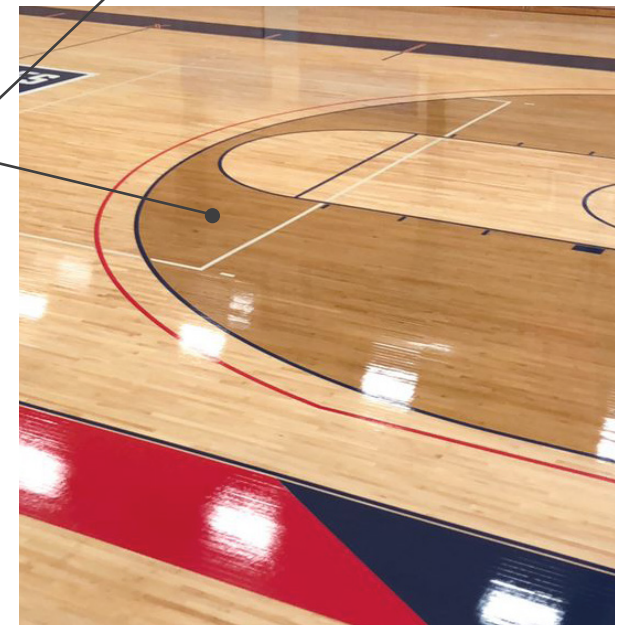
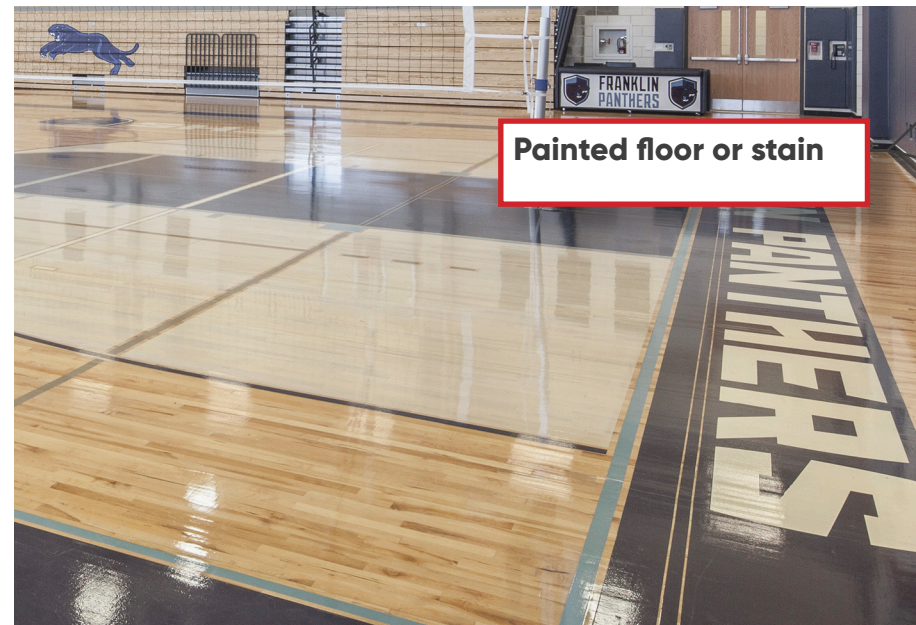
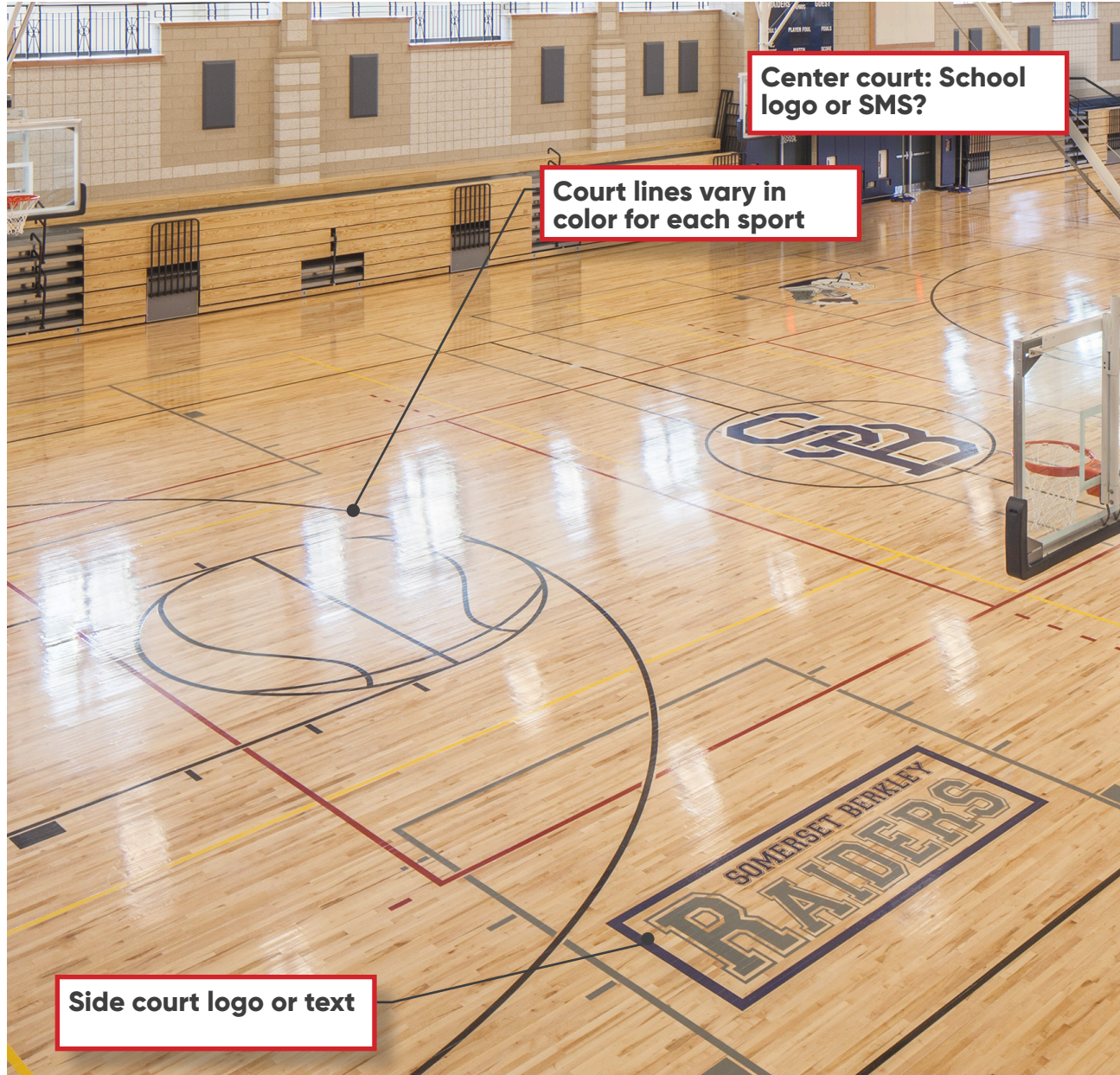
SOMERSET
MIDDLE SCHOOL

Gym floor lines, color, and logo: Example images



SOMERSET
MIDDLE SCHOOL

Gym floor lines, color, and logo: Example images





SOMERSET MIDDLE SCHOOL

Proposed List of Alternates

Alternate #1

Installation of existing 285 kW Photovoltaic Array System

Alternate #2

Exterior Storage Building

Alternate #3

Parking and additional vehicular circulation along Brayton Avenue

Alternate #4

Additional multi-purpose field

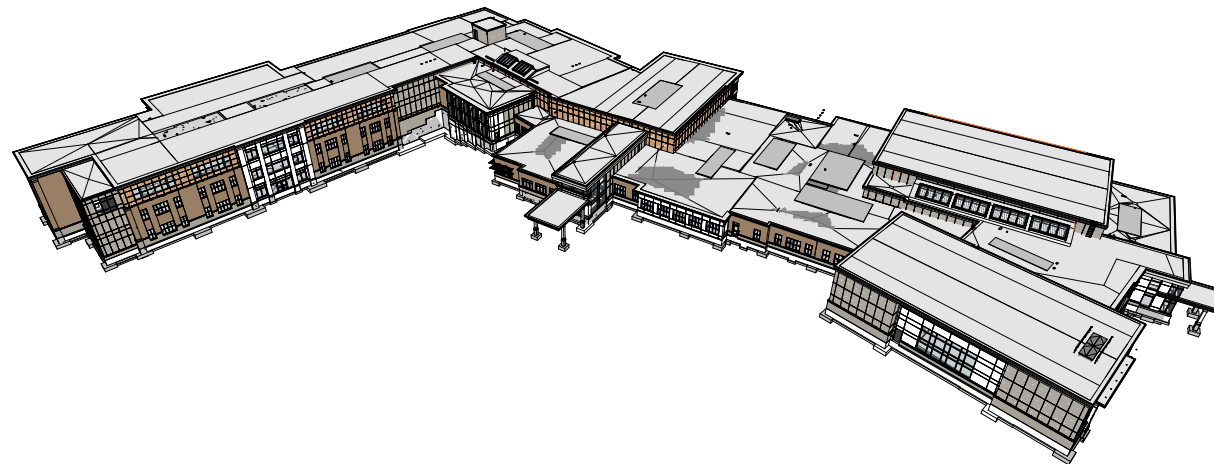
SOMERSET MIDDLE SCHOOL

Proposed List of Alternates

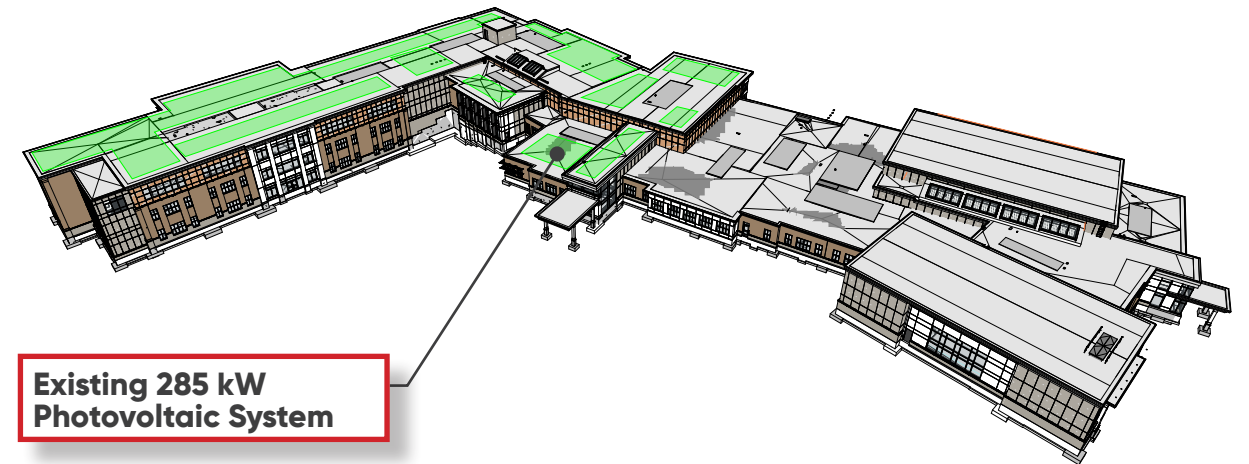
Alternate #1

Installation of existing 285 kW Photovoltaic Array System

Proposed Base Bid



Proposed Alternate INCLUDING re-use of existing 285 kW PV System



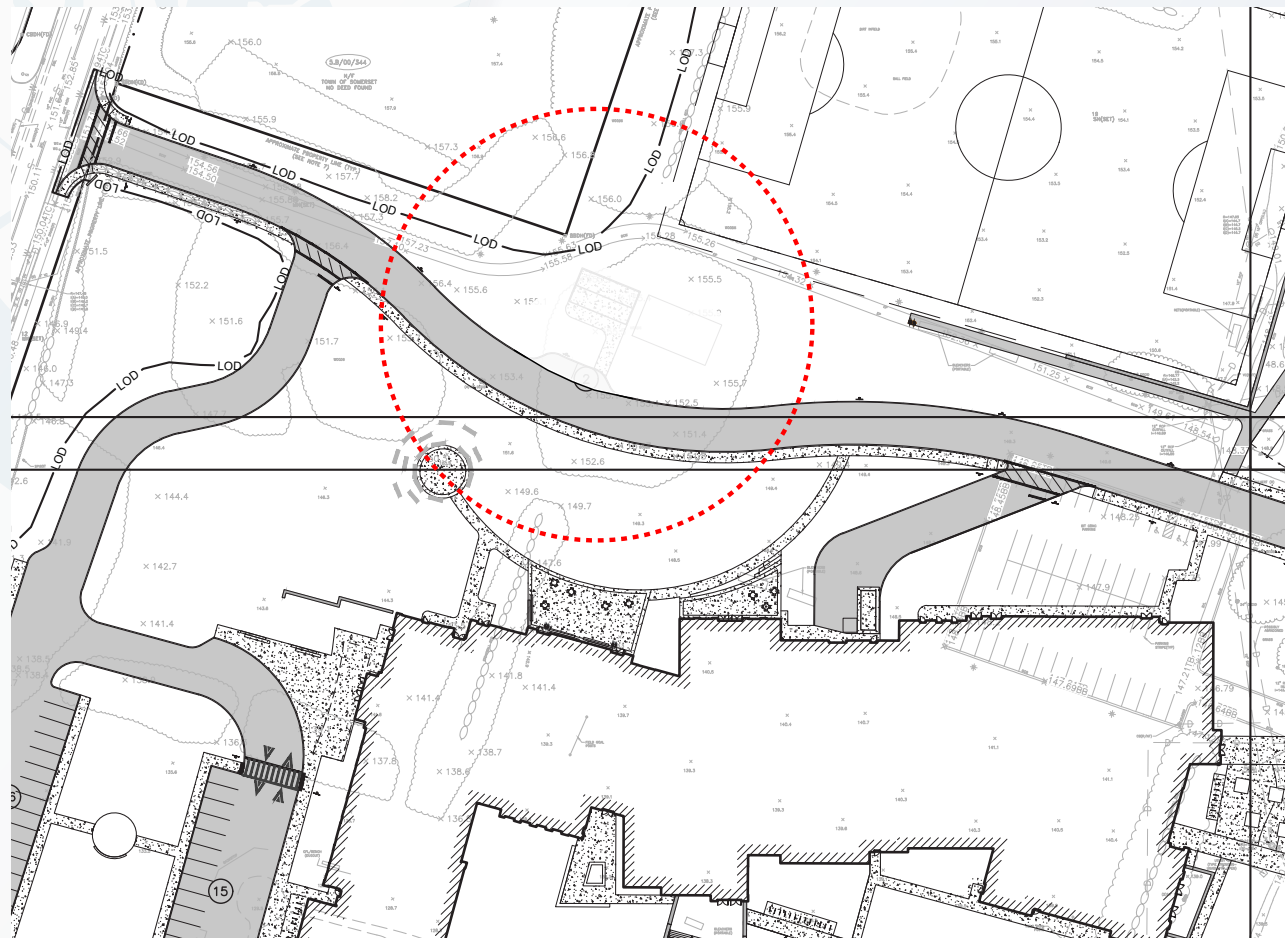
SOMERSET MIDDLE SCHOOL

Proposed List of Alternates

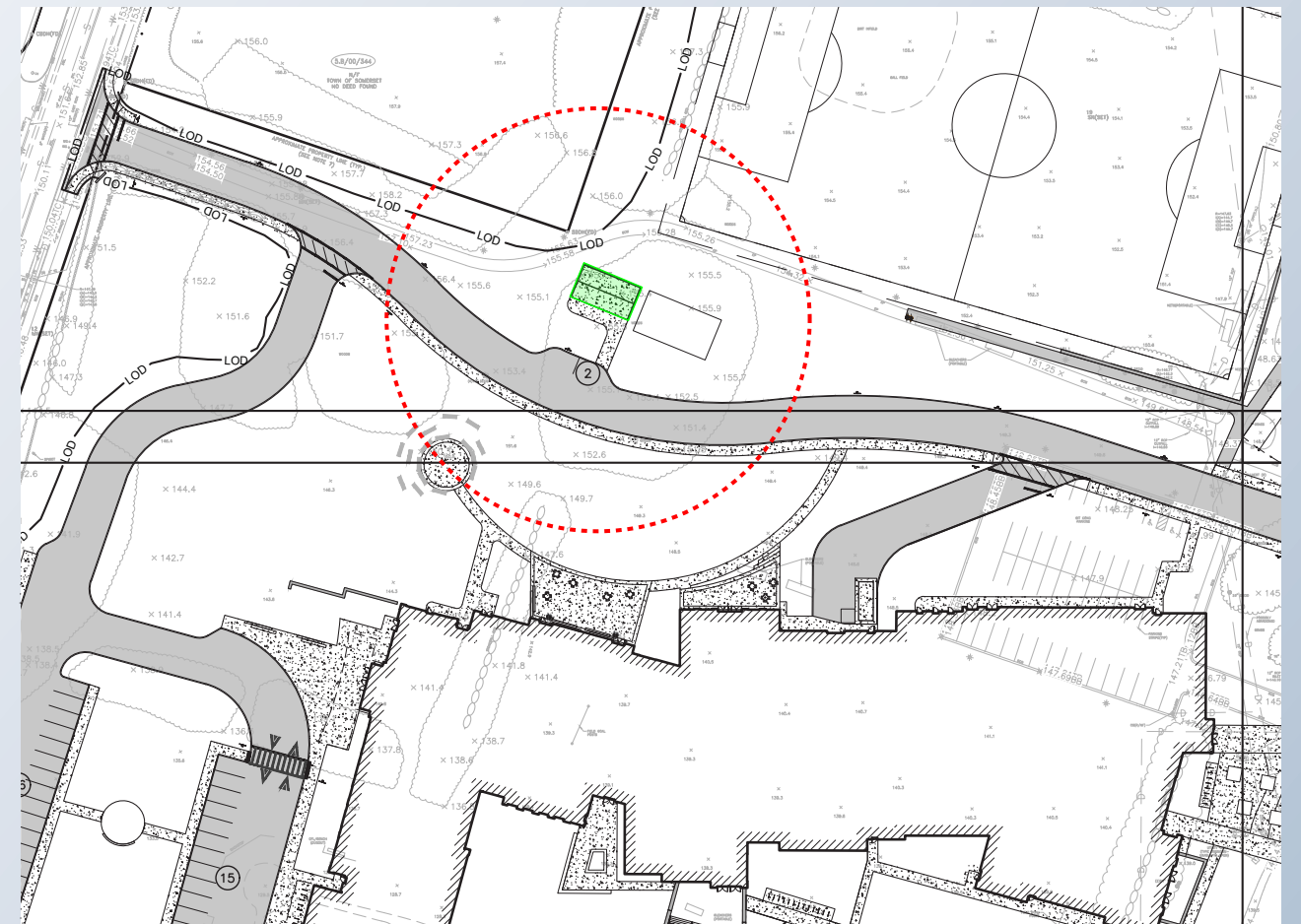
Alternate #2

Exterior Storage Building

Proposed Base Bid without Exterior Storage Building



Proposed Alternate ADDING Exterior Storage Building



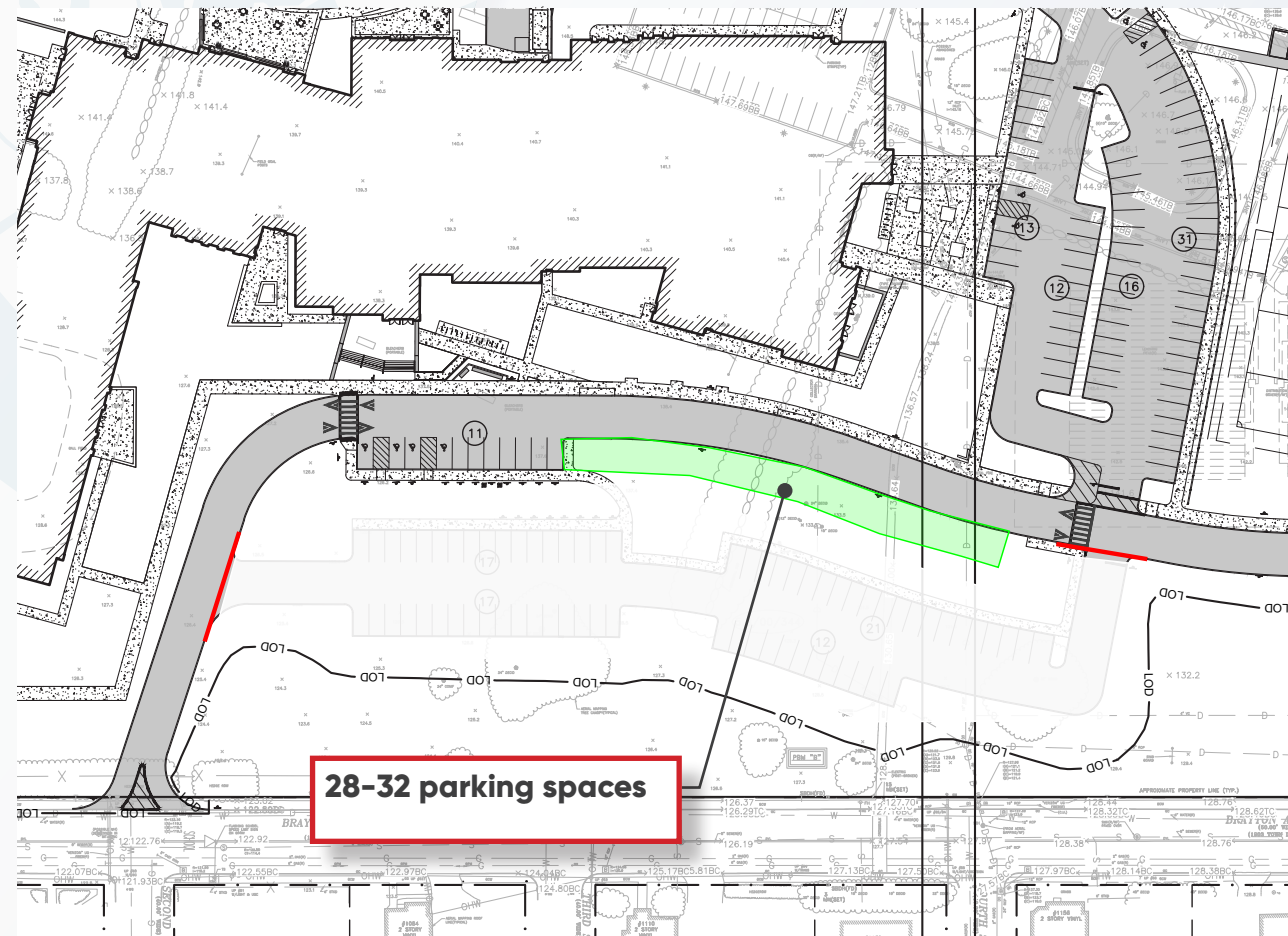
SOMERSET MIDDLE SCHOOL

Proposed List of Alternates

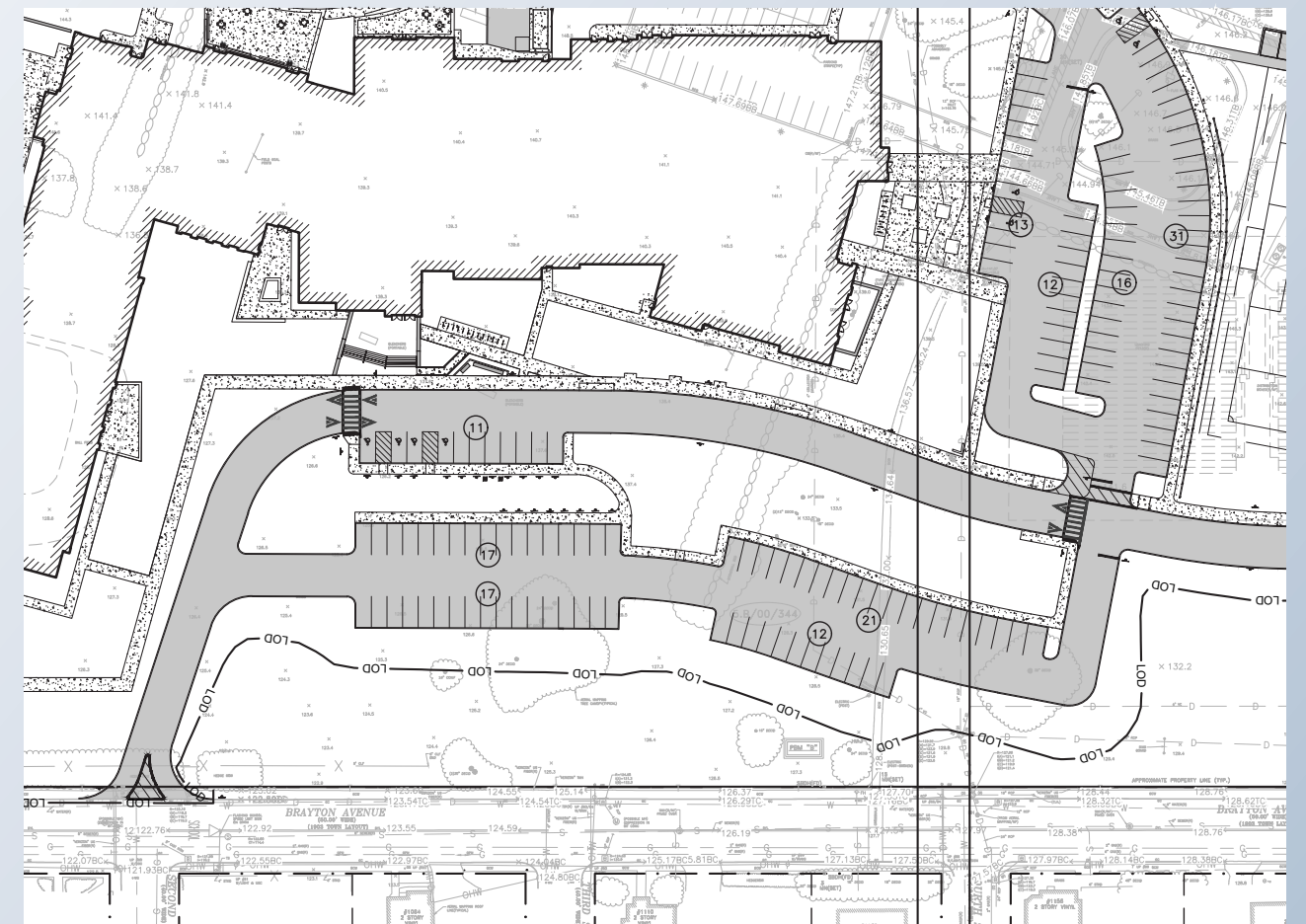
Alternate #3

Parking and additional vehicular circulation along Brayton Avenue

Proposed Base Bid site design



Proposed Alternate site design



SOMERSET MIDDLE SCHOOL

Proposed List of Alternates

Alternate #4

Additional multi-purpose field

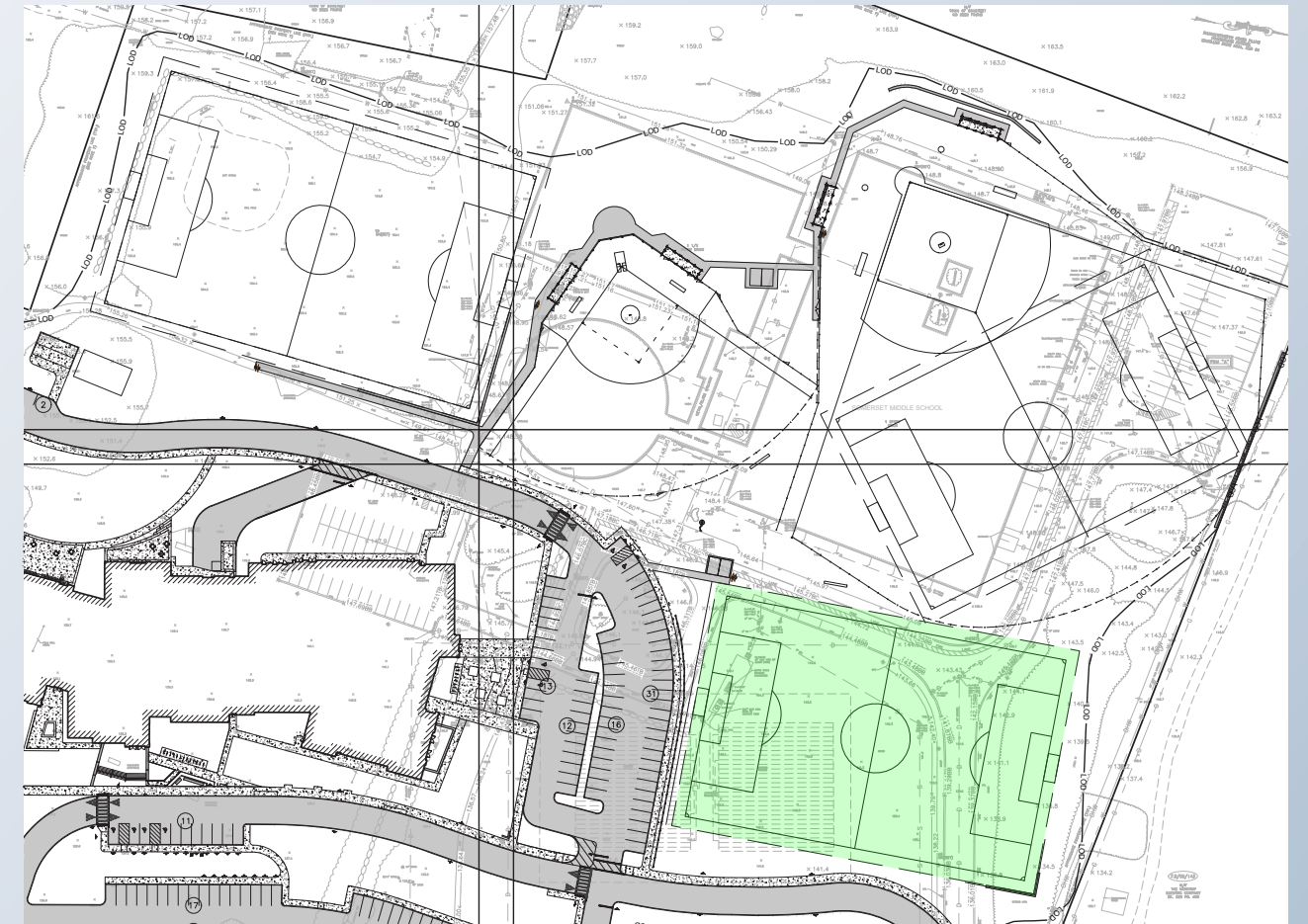
Proposed Base Bid site design

1 Baseball Field, 1 Softball Field, 2 Multipurpose Fields



Proposed Alternate site design

1 Baseball Field, 1 Softball Field, 3 Multipurpose Fields



Tree Preservation Report

A Tree Preservation Report was prepared by Bartlett Tree Experts on January 17, 2022

- The report includes observations, tree impacts, and tree preservation guidelines and design recommendations for the property.
- A total of seven trees were assessed throughout the property in order to determine their suitability for preservation during construction activities and to provide recommendations to improve tree survivability. This evaluation includes a review of:
 - Tree species
 - Trunk diameter
 - Health and structural condition
- It was concluded that two trees will have to be removed, including the Chestnut Tree along Read Street due to eternal decay.
- Five trees can be preserved.

TABLE 1: TREE CONDITION AND ABUNDANCE

Common Name	Scientific Name	Dead	Poor	Fair	Good	Total
Maple-Red	<i>Acer rubrum</i>	-	-	1	-	1
Maple-Norway	<i>Acer platanoides</i>	-	1	-	-	1
Maple-Silver	<i>Acer saccharinum</i>	-	-	1	-	1
Horsechestnut-Common	<i>Aesculus hippocastanum</i>	-	1	-	-	1
Cypress-White	<i>Chamaecyparis thyoides</i>	-	-	-	1	1
Tupelo	<i>Nyssa sylvatica</i>	-	-	-	2	2
Total		-	2	2	3	7

SOMERSET MIDDLE SCHOOL

Tree Preservation Report

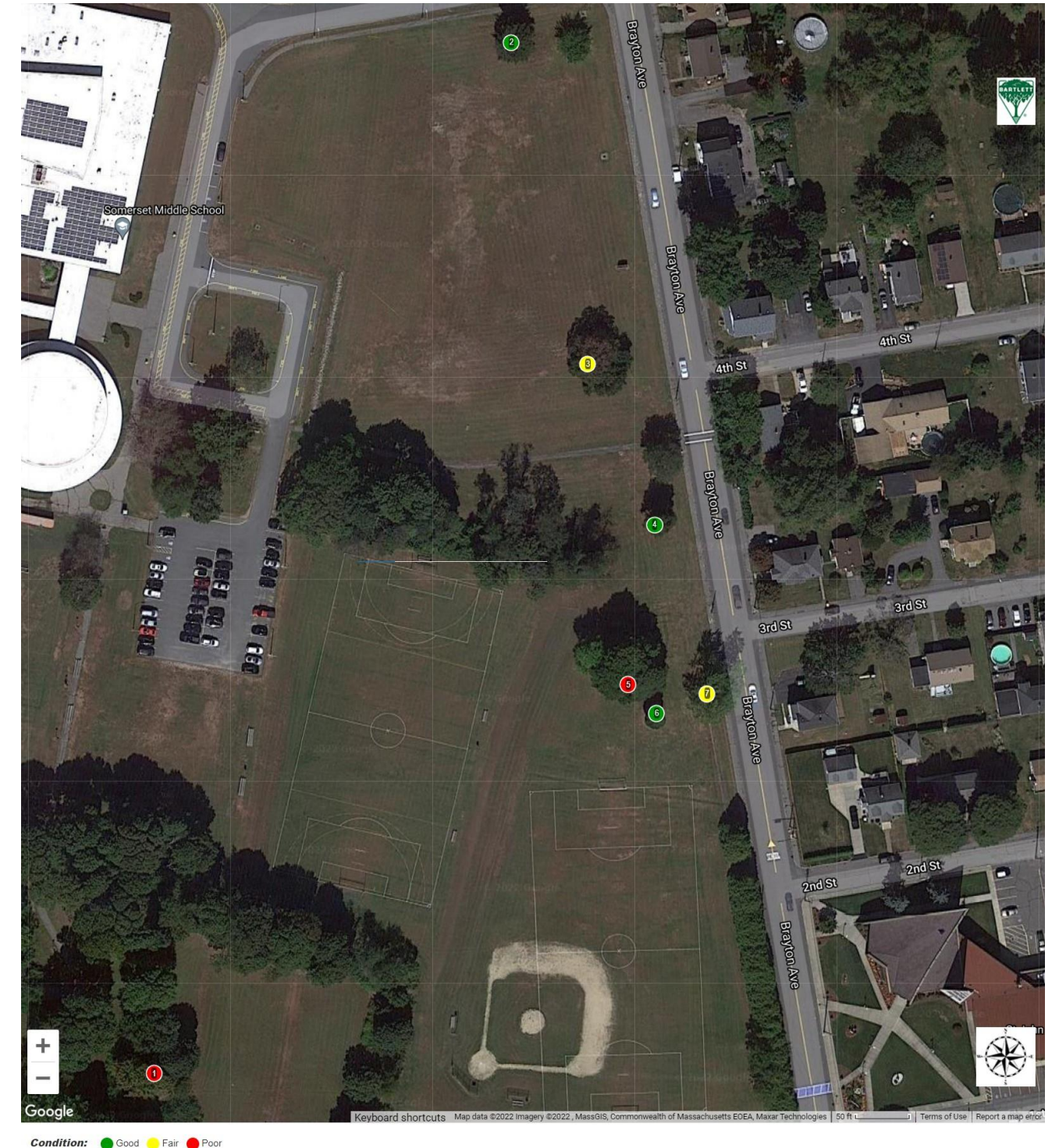
Condition: ● Good ● Fair ● Poor

Appendix II – Tree Inventory Table

Tree ID	Common Name	Condition Class	DBH	Priority Level	Suitability for Preservation	Recommendations	TPZ Radius (ft)
1	Horsechestnut-Common	Poor	53	1	Low	Remove	N/A
2	Tupelo	Good	22	2	High	RCX, Prune	17.6
3	Maple-Red	Fair	30	1	Moderate	RCX, Prune, Fertilize	27
4	Tupelo	Good	15	2	High	Prune	12
5	Maple-Norway	Poor	22	1	Low	Remove	N/A
6	Cypress-White	Good	23	1	High	-	23
7	Maple-Silver	Fair	44	1	Moderate	Prune	52.8

*All trees would benefit from fertilization and fortifite amendment following construction to alleviate stress following construction activities.

Appendix I – Tree Inventory Map



SMS

SOMERSET MIDDLE SCHOOL

